

POLITECNICO DI BARI



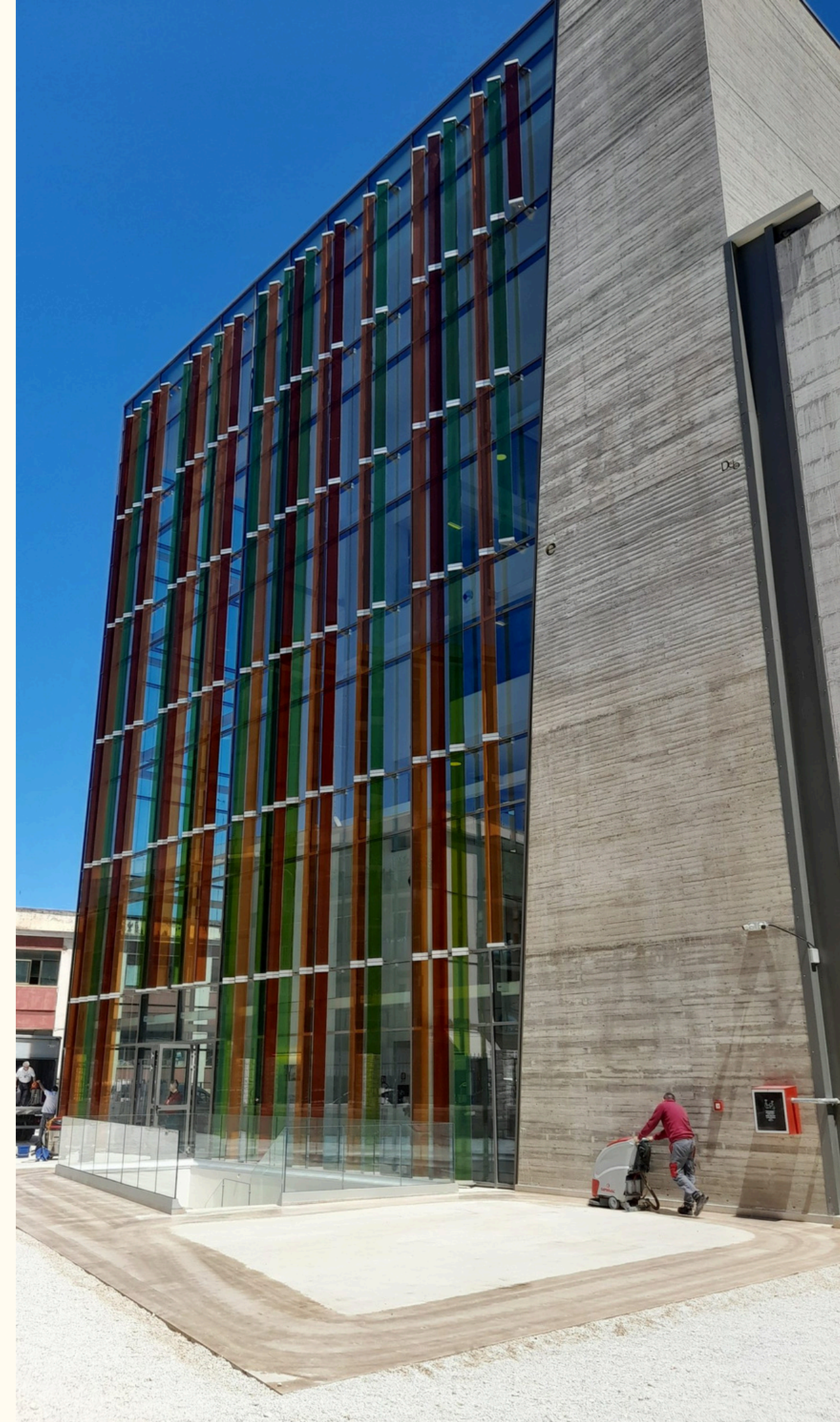
# FACT SHEET 2025-2026

*INTERNATIONALIZATION DEPARTMENT*



# POLITECNICO DI BARI I BARI05

Via Re David, 200 – 70125 BARI - ITALY





# Main references

## INSTITUTIONAL ERASMUS+ COORDINATOR

*Name, Phone, Email*

*Dr. Antonella PALERMO*

*+39 080 596 2179*

*antonella.palermo@poliba.it*

## HEAD OF INTERNATIONALIZATION DEPARTMENT

*Name, Phone, Email*

*Dr. Rosilda SAMMARCO*

*+39 080 596 2582*

*rosilda.sammarco@poliba.it*

## HEAD OF VISITING RESEARCHERS OFFICE

*Name, Phone, Email*

*Dr. Roberta MASCETTI*

*+39 080 596 2227*

*roberta.mascetti@poliba.it*

## ERASMUS OFFICER

*Name, Email*

*Dr. Antonella GUERRA*

*+39 080 596 2581*

*antonella.guerra@poliba.it*



## OFFICIAL WEBSITE

<http://www.poliba.it>

## COURSE CATALOGUE

[https://poliba.esse3.cineca.it/Guide/ListaFacoltaCorsi.do;jsessionid=4F3D68146A12D6843566BD2595C53CA2.esse3-poliba-prod-05?cod\\_lingua=eng](https://poliba.esse3.cineca.it/Guide/ListaFacoltaCorsi.do;jsessionid=4F3D68146A12D6843566BD2595C53CA2.esse3-poliba-prod-05?cod_lingua=eng)

## WEBSITE FOR DEPARTMENTAL INFORMATION

<http://dei.poliba.it/DEI-it/index.html>

<https://www.dipartimentoicar.it/>

<http://dmmm.poliba.it/>

<http://www.dicatech.poliba.it/index.php?id=258>





## NOMINATION DEADLINES

**Full year/Fall semester:**

15th June

**Spring Semester:**

15th November

EMAIL ADDRESS  
FOR NOMINATIONS

**international@poliba.it**

## APPLICATION DEADLINES

**Full year/Fall semester:**

30th September

**Spring Semester:**

28th February

Application instructions will be sent by email after we receive your nomination.

## ACADEMIC CALENDAR

**1st Semester (winter):**

1st October – 28th February

(exams in January-February)

**2nd Semester (spring):** 1st March  
– 31st July (exams in June - July)

Dates are subject to change. Please consult the following link closer to the start of your mobility

<https://www.poliba.it/it/didattica/calendario-didattico-202425>



# Learning Agreement

- THE LEARNING AGREEMENT MUST BE SUBMITTED ONLY THROUGH **EWP**
- AT LEAST 70% OF THE COURSES IN THE LA MUST BELONG TO THE ISCED AREA STATED IN THE IIA. THE REMAINING COURSES CAN BE CHOSEN FROM OTHER PROGRAMS, BUT THE MAJORITY MUST COMPLY WITH THE IIA

*For example, if there is an agreement with area 0713 or 0714, the students have to predominantly choose exams in Electrical Engineering (0713), or in Electronics and Automation (in the case of area 0714), of the DEI Department.*

- **MAXIMUM CREDITS FOR SEMESTER: 30 ECTS**
- **MAXIMUM 60 ECTS FOR YEAR**



# Language of instruction

All courses are taught in Italian, except for the Master Degree Courses in:

- Industrial Design
- Mechanical Engineering
- Telecommunications Engineering
- Informatics Engineering
- Automation
- All Ph.D Courses

which are taught in English.

ITALIAN





# Language required

B1 level of Italian and B2 English

## LANGUAGE CERTIFICATE

Recommended but not compulsory

## LANGUAGE CENTER

<http://www.poliba.it/it/linguistico/centro-linguistico-di-ateneo>

## CONTACT PERSON

Dr. Valeria Marangio - [languages@poliba.it](mailto:languages@poliba.it)

---





# Departments and Coordinators

ISCED CODE:  
0730



**ArCoD**  
Politecnico di Bari

DIPARTIMENTO DI ARCHITETTURA, COSTRUZIONE  
E DESIGN

## ARCHITECTURE

**INCOMING Students:** Prof. Fabio RIZZO  
[fabio.rizzo@poliba.it](mailto:fabio.rizzo@poliba.it)

**OUTGOING Students:** Prof. Domenico PASTORE  
[domenico.pastore@poliba.it](mailto:domenico.pastore@poliba.it)



# Departments and Coordinators

ISCED CODE:  
0212



**ArCoD**  
Politecnico di Bari



DIPARTIMENTO DI ARCHITETTURA, COSTRUZIONE  
E DESIGN

**INDUSTRIAL DESIGN**

**INCOMING Students:** Prof. Vincenzo Paolo BAGNATO  
[vincenzopaolo.bagnato@poliba.it](mailto:vincenzopaolo.bagnato@poliba.it)

**OUTGOING Students:** Prof.ssa Rosa PAGLIARULO  
[rosa.pagliarulo@poliba.it](mailto:rosa.pagliarulo@poliba.it)





# Departments and Coordinators

ISCED CODE:  
0732



DIPARTIMENTO DI INGEGNERIA CIVILE,  
AMBIENTALE, DEL TERRITORIO, EDILE E DI CHIMICA

## **BUILDING ENGINEERING BUILDING-ARCHITECTURE ENGINEERING**

Prof. Francesco IANNONE

[francesco.iannone@poliba.it](mailto:francesco.iannone@poliba.it)

## **CIVIL AND ENVIRONMENTAL ENGINEERING**

Prof.ssa Francesca DE SERIO

[francesca.deserio@poliba.it](mailto:francesca.deserio@poliba.it)



# Departments and Coordinators



**TELECOMMUNICATIONS, AUTOMATION AND ELECTRONIC ENGINEERING (ISCED CODE 0714)**

**ELECTRICAL ENGINEERING (ISCED CODE 0713)**

**COMPUTER SCIENCE (ISCED CODE 0610)**

**MEDICAL SYSTEMS ENGINEERING (ISCED CODE 0710)**



**INCOMING Students:** Prof. Maurizio SPADAVECCHIA  
maurizio.spadavecchia@poliba.it

**OUTGOING Students:** Prof. Guido MAIONE  
guido.maione@poliba.it



# Departments and Coordinators



ISCED CODE:  
0710

**MANAGEMENT ENGINEERING**

**INCOMING Students:** Prof. Claudio SASSANELLI  
[claudio.sassanelli@poliba.it](mailto:claudio.sassanelli@poliba.it)

**OUTGOING Students:** Prof.ssa Roberta PELLEGRINO  
[roberta.pellegrino@poliba.it](mailto:roberta.pellegrino@poliba.it)



# Departments and Coordinators



ISCED CODE:  
0715

**MECHANICAL ENGINEERING  
ENERGETIC ENGINEERING**

**INCOMING Students:** Prof. Fulvio LAVECCHIA  
fulvio.lavecchia@poliba.it

**OUTGOING Students:** Prof. Marco TORRESI  
marco.torresi@poliba.it







In the Italian university system, each course unit is graded on a scale from 18 to 30 points, (minimum 18 – maximum 30). To pass a course unit, a student must receive a grade of at least 18 points out of 30. “30 e lode” is a special mention for outstanding performance.

As a rule non-passing grades are simply not awarded, and the exam is not registered in the student's career.

For the final degree, a 111-point scale is used. Passing grades are 66 to 110, with the additional superior grade “110 e lode” (110 cum laude). The mark for the final degree is given on the basis of all marks obtained in exams, and on the evaluation of the final thesis.

# Italian grading System



European Health Insurance Card, compulsory for all EU students.  
A private insurance coverage is highly recommended.

# Safety and Health



# Immigration Requirements



EU students (except Turkish): identity card or Passport.

Non European and Turkish students must arrive with a student visa, whose application can be made at the Italian Diplomatic and Consular Authorities in your country of residence. In order to find out whether you need an entry visa or not you can simply use the database of the Italian Ministry of Foreign Affairs. You will be asked to enter their nationality, country of residence, length and reason of the stay.



# Guide for International Incoming Students

<http://www.poliba.it/it/internazionale/studyingpoliba-international-students>



# Accommodation Service

Our Institution doesn't provide reserved places at Student House; students are required to find accommodation by themselves.

The support in finding accommodation can be provided by:

ESN Bari (<http://www.esnbari.org>);

International Community Erasmus Bari (IC BARI), (<https://www.facebook.com/whiteandrederasmusland/?ref=bookmarks>);

CampusX Bari (<http://www.campusxbari.it>);

CercoAlloggio Bari (<https://www.cercoalloggio.com/#!/international>);

HousingAnywhere (<https://housinganywhere.com/s/Bari--Italy>);

Erasmus Play for Incoming and Outgoing students (<https://erasmusplay.com/it/>)





enjoy



#Erasmus+

Politecnico di Bari - International Relations Office